

## SEWER SYSTEM EVALUATION SURVEY (SSES)

## CLOSED CIRCUIT TV (CCTV)

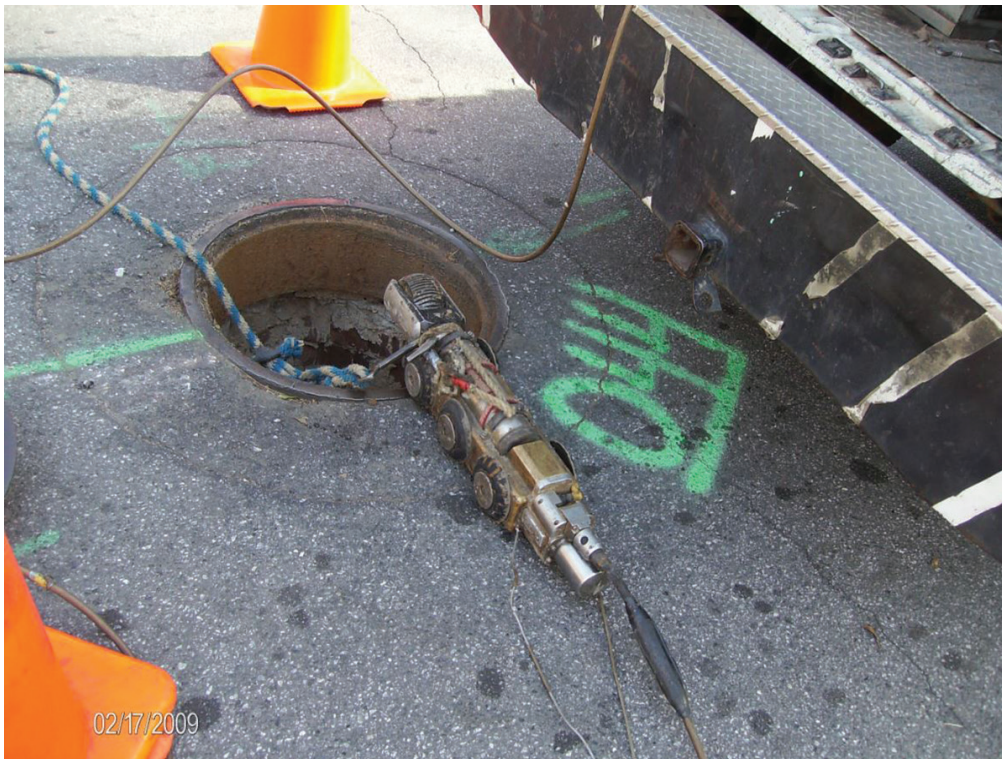


## WHAT IS CCTV?

Closed Circuit Television (CCTV) is a method used to survey sewer lines. This cutting-edge technology employs a television camera mounted on a robotic device that is connected by cable to a video monitor, a videocassette recorder and other recording devices.

## HOW DOES CCTV WORK?

The robotic system is placed directly into the sewer through a manhole. Once inside, the device can be operated by remote control. The operator can examine the entire length of the sewer line between two manholes. The camera's pan- and-tilt capabilities allow the operator to move the camera in all directions. The CCTV system relays live footage from within the sewer to a high-resolution monitor in a mobile survey unit. The footage is also recorded on videotape. The operator has full control of the robotic system, so if a defect is detected, the camera can be stopped and the problem investigated. The camera's advanced capabilities allow service connections to be located and documented. An electronic footage counter is connected to the camera, allowing exact locations of problem spots to be determined. A structural and service condition report is created as the live footage is viewed, documenting all defects and noting the general condition of the section of sewer.



## WHAT ARE THE BENEFITS OF CCTV?

Most of the sewers in Atlanta are too small for a human inspector. The use of CCTV technology allows the design engineer to determine the extent of the pipe defect and then determine the appropriate method of pipe rehabilitation. This approach has been proven to improve efficiency and reduce safety hazards that are always present when working with sewers. It also helps save time and money by allowing for more effective management of capital resources on sewer repair, replacement, and rehabilitation.

## FACT SHEET



City of Atlanta  
Mayor Keisha Lance Bottoms

## Atlanta City Council

Felicia Moore *President*  
Carla Smith *District 1*  
Amir R. Farokhi *District 2*  
Antonio Brown *District 3*  
Cleta Winslow *District 4*  
Natalyn Mosby Archibong *District 5*  
Jennifer N. Ide *District 6*  
Howard Shook *District 7*  
J.P. Matzigkeit *District 8*  
Dustin Hillis *District 9*  
Andrea Boone *District 10*  
Marci Collier Overstreet *District 11*  
Joyce Sheperd *District 12*  
Michael Julian Bond *Post 1 at Large*  
Matt Westmoreland *Post 2 at Large*  
Andre Dickens *Post 3 at Large*

Kishia L. Powell  
Commissioner  
Department of Watershed Management



CITY OF ATLANTA DEPARTMENT OF  
**watershed  
management**

**CLEAN WATER ATLANTA**



DWM Customer Service: 404-546-0311  
[www.atlantawatershed.org/cleanwateratlanta](http://www.atlantawatershed.org/cleanwateratlanta)

**Clean Water Atlanta** is a comprehensive program created to ensure clean drinking water, clean streams and a healthy environment for the City of Atlanta and its downstream neighbors. To learn more about Clean Water Atlanta please visit our website [www.Atlantawatershed.org/cleanwateratlanta](http://www.Atlantawatershed.org/cleanwateratlanta) or call 311.