

ASHBY-JETT OUTFALL SEWER IMPROVEMENTS

The Purpose of this project is to upsize the existing Ashby-Jett outfall from 18-inches to 30-inches. Upsizing the outfall will provide capacity relief and reduce the surcharge conditions in the existing trunk line. The project includes upsizing the existing line through open cut methodology between MH23170421101 (west of the existing CSX railroad) to MH2317420601 (where the sewer discharges into the 48" Proctor Creek Trunk).

Project Scope

- Replacing about 1,300 feet of the existing 18-inch sewer with a 30-inch sewer

Beneficial Impacts

- Provide adequate system capacity relief
- Reduce the surcharge in the existing outfall
- Reduce infiltration/inflow (I/I)

For more information contact:

Leon Bowers
Public Information Officer

City Of Atlanta
Department Of Watershed Management
Clean Water Atlanta Program

72 Marietta St. NW
Atlanta, Ga. 30303
404-546-3297

Follow us or visit our website!



@ATLWatershed

www.cleanwateratlanta.h2o4atl.com



PROCTOR CREEK SEWER BASIN

Ashby-Jett Outfall Sewer Improvements



Neighborhoods

Bankhead, Hills Park, Center Hill,
Grove Park, Washington Park, Hunter
Hills Knight Park

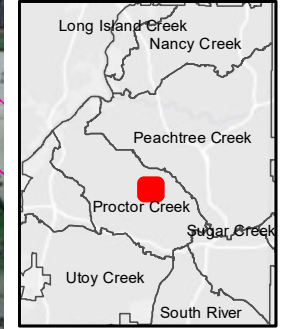
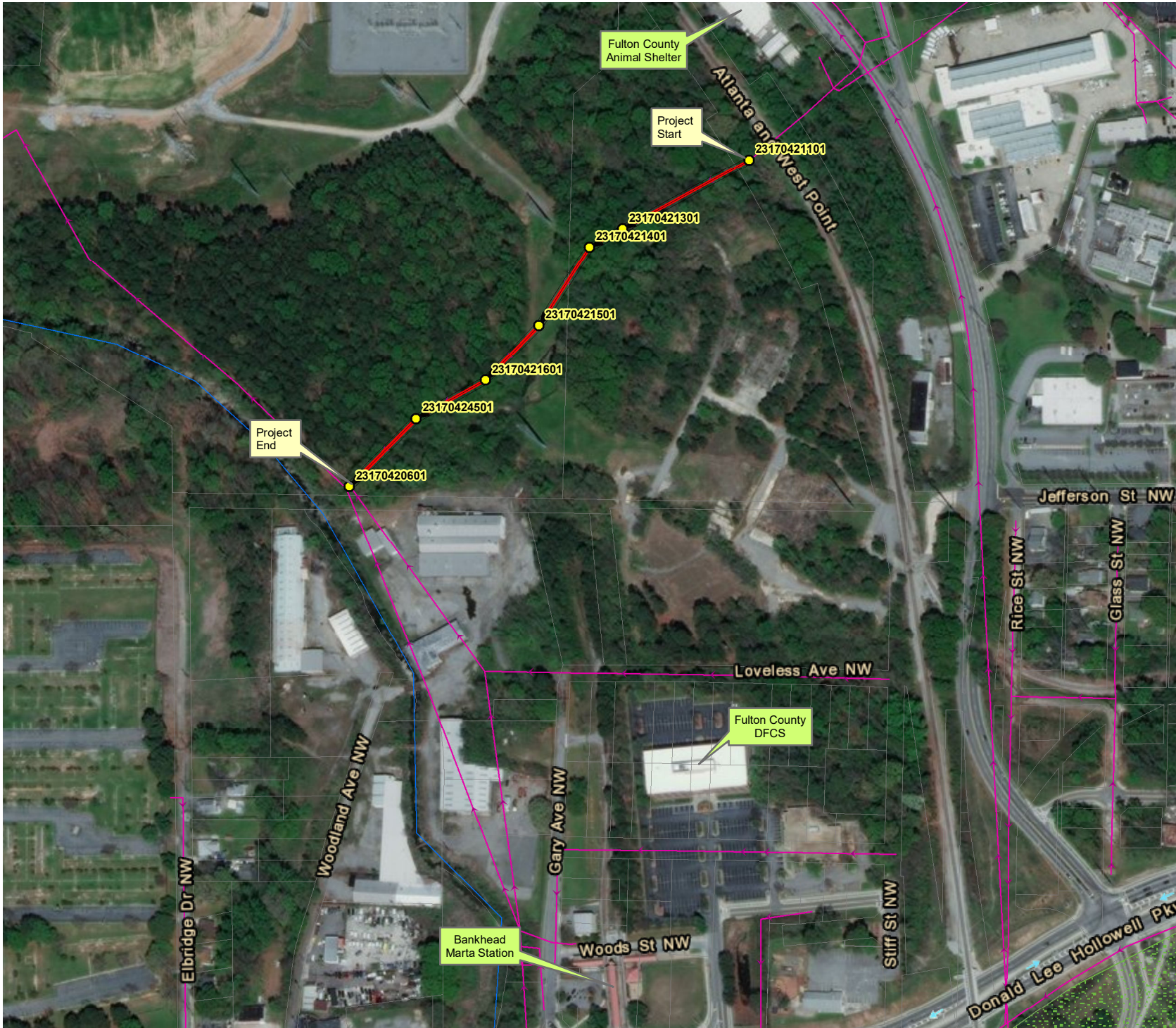
Neighborhood Planning Units

L & K

Council Districts

3

ASHBY-JETT OUTFALL SEWER IMPROVEMENTS



Legend

- Sewer Manholes
- Improvement Project
- Existing Sewer Route
- Major Hydrology
- Parcels
- Parks

**ASHBY-JETT OUTFALL
SEWER IMPROVEMENTS**

Proctor Creek Basin
Atlanta, Georgia

